

Ethanolamine Kinase (EKI1) Antibody (C-term)
Purified Rabbit Polyclonal Antibody (Pab)
Catalog # AP7068b**Specification**

Ethanolamine Kinase (EKI1) Antibody (C-term) - Product Information

Application	WB,E
Primary Accession	Q9HBU6
Reactivity	Human, Hamster, Mouse
Host	Rabbit
Clonality	Polyclonal
Isotype	Rabbit IgG
Calculated MW	50968
Antigen Region	356-386

Ethanolamine Kinase (EKI1) Antibody (C-term) - Additional Information**Gene ID** 55500**Other Names**

Ethanolamine kinase 1, EKI 1, ETNK1, EKI1

Target/Specificity

This Ethanolamine Kinase (EKI1) antibody is generated from rabbits immunized with a KLH conjugated synthetic peptide between 356-386 amino acids from the C-terminal region of human Ethanolamine Kinase (EKI1).

Dilution

WB~~1:1000

E~~Use at an assay dependent concentration.

Format

Purified polyclonal antibody supplied in PBS with 0.09% (W/V) sodium azide. This antibody is prepared by Saturated Ammonium Sulfate (SAS) precipitation followed by dialysis against PBS.

Storage

Maintain refrigerated at 2-8°C for up to 2 weeks. For long term storage store at -20°C in small aliquots to prevent freeze-thaw cycles.

Precautions

Ethanolamine Kinase (EKI1) Antibody (C-term) is for research use only and not for use in diagnostic or therapeutic procedures.

Ethanolamine Kinase (EKI1) Antibody (C-term) - Protein Information**Name** ETNK1 ([HGNC:24649](#))**Function** Highly specific for ethanolamine phosphorylation. May be a rate-controlling step in

phosphatidylethanolamine biosynthesis.

Cellular Location

Cytoplasm.

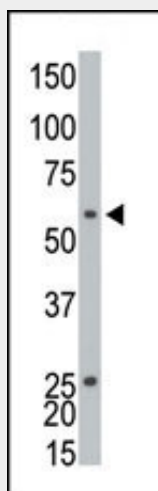
Tissue Location

Expressed in kidney, liver, placenta, heart, leukocyte, ovary and testis.

Ethanolamine Kinase (EKI1) Antibody (C-term) - Protocols

Provided below are standard protocols that you may find useful for product applications.

- [Western Blot](#)
- [Blocking Peptides](#)
- [Dot Blot](#)
- [Immunohistochemistry](#)
- [Immunofluorescence](#)
- [Immunoprecipitation](#)
- [Flow Cytometry](#)
- [Cell Culture](#)

Ethanolamine Kinase (EKI1) Antibody (C-term) - Images

The anti-EKI1 Pab (Cat. #AP7068b) is used in Western blot to detect EKI1 in CHO cell lysate.

Ethanolamine Kinase (EKI1) Antibody (C-term) - Background

Ethanolamine kinase 1 (EKI1), functions in the first committed step of the phosphatidylethanolamine synthesis pathway. This cytosolic enzyme is specific for ethanolamine and exhibits negligible kinase activity on choline.